

Project Title: MIRACLE - Microscopic Image Processing Analysis Coding and Modelling Environment

Contract No: PIRSES-GA-2009-247091

Instrument: SESAM

Thematic Priority: Medical image processing

Start of project: 1 May 2010

Duration: 36 months

Deliverable No: D2
Best wavelets for FL images

Due date of deliverable: 1 March 2011

Actual submission date: 1 December 2012

Version: 1

Main Authors: Alexander Suhre, Enis Cetin,

Project ref. number	PIRSES-247091
Project title	MIRACLE - Microscopic Image Processing Analysis Coding and Modelling Environment

Deliverable title	Best wavelets for FL images
Deliverable number	D2
Deliverable version	V1
Previous version(s)	-
Contractual date of delivery	1 March 2011
Actual date of delivery	10 December 2012
Deliverable filename	MiracleDeliverable2WP21.doc
Nature of deliverable	Report
Dissemination level	Public
Number of pages	7
Workpackage	2
Partner responsible	BILKENT
Author(s)	Alexander Suhre, Enis Cetin,
Editor	Alexander Suhre
EC Project Officer	Alexandra Pedersen

Abstract	Complex wavelets features are found to outperform conventional wavelets.
Keywords	Feature extraction, microscopic images

A MULTIPLICATION-FREE FRAMEWORK FOR SIGNAL PROCESSING AND APPLICATIONS IN BIOMEDICAL IMAGE ANALYSIS

Alexander Suhre¹, Furkan Keskin¹, Tulin Ersahin², Rengul Cetin-Atalay², Rashid Ansari³, A. Enis Cetin¹,

¹Department of Electrical and Electronics Engineering

²Department of Molecular Biology and Genetics

Bilkent University, 06800 Bilkent, Ankara, Turkey

³Department of Electrical and Computer Engineering, University of Illinois
Chicago, IL 60607

ABSTRACT

A new framework for signal processing is introduced based on a novel vector product definition that permits a multiplier-free implementation. First a new product of two real numbers is defined as the sum of their absolute values, with the sign determined by product of the hard-limited numbers. This new product of real numbers is used to define a similar product of vectors in R^N . The new vector product of two identical vectors reduces to a scaled version of the l_1 norm of the vector. The main advantage of this framework is that it yields multiplication-free computationally efficient algorithms for performing some important tasks in signal processing. An application to the problem of cancer cell line image classification is presented that uses the notion of a co-difference matrix that is analogous to a covariance matrix except that the vector products are based on our new proposed framework. Results show the effectiveness of this approach when the proposed co-difference matrix is compared with a covariance matrix.

Index Terms— Inner-product space, image classification, region covariance, co-difference

1. INTRODUCTION

Implementation of signal processing algorithms usually requires a large number of multiplications. It is desirable to avoid heavy multiplication burden in applications where high energy consumption is a concern. Toward this end a new framework for signal processing is proposed by introducing a novel vector product definition that permits a multiplier-free implementation. The new vector product uses an operator that defines the product of two real numbers as the sum of their absolute values, with the same sign as the ordinary multiplication of two numbers. multiplication is an energy consuming

operation, especially in ARM-type processors used in tablet computers and mobile devices. therefore, the new operator allows users to perform image and signal processing in low-cost processors.

An application of the new vector product is feature extraction from images. Recently, region covariance approaches [1] have become quite popular in the fields of image processing and computer vision. Their application includes object recognition, tracking and classification. Despite their superior performance, the computational burden of computing a covariance matrix for multiple image regions is relatively high. Recently, a computationally more efficient alternative to the covariance matrix, the so-called co-difference matrix was introduced [2] and successfully applied to several application areas [3]. In this paper, firstly, we look more deeply into the properties of the co-difference operator. Secondly, we apply the co-difference matrix to a new application area, i.e., the classification of cancer cell line images and compare its performance with the established covariance matrix method.

In section 2, the proposed multiplier-less operator is defined. In section 3 the application of the proposed multiplier to an image classification problem is explained and comparisons of the proposed region co-difference matrix with the established region covariance matrix are shown.

2. VECTOR PRODUCT AND IMAGE FEATURE EXTRACTION ALGORITHM

In this section, we first review the covariance matrix based feature extraction. We then introduce the multiplication-free co-difference matrix approach.

Given an intensity image I of size $m \times n$, we define a mapping ϕ from image domain to feature domain as

$$F(x, y) = \phi(I, x, y) \quad (1)$$

where each pixel (x, y) is mapped to a set of features and F is a feature function computed as a $m \times n \times d$ array. For a given subwindow W consisting of N pixels, let $(\mathbf{f}_k)_{k=1 \dots N}$ be the

This study was carried out as part of the MIRACLE project, which is funded by the European Community as an IRSES Project 247091. The authors would like to thank B Carr (University of Pittsburgh, PA, USA) for providing Hep40 and Hep3B-TR cell lines.

d -dimensional feature vectors extracted from W . Then, the covariance matrix of region W can be computed as follows

$$\mathbf{C}_v = \frac{1}{N-1} \sum_{k=1}^N (\mathbf{f}_k - \mu)(\mathbf{f}_k - \mu)^T \quad (2)$$

where μ is the mean of the feature vectors inside the region W . The covariance matrix is symmetric positive-definite and of size d -by- d . The computational complexity of the covariance matrix is relatively large, i.e., $\mathcal{O}(N)$. Computational cost becomes especially important when a large image needs to be scanned at different scales. In [2], an efficient multiplier-less implementation of covariance descriptors, called co-difference matrices, was introduced. In the co-difference method, an operator based on additions instead of the multiplications as in the covariance method is used. This methodology gives comparable results in regular texture classification [3]. Let a and b be two real numbers. The new operator is defined as follows.

$$a \oplus b = \text{sgn}(a \times b) \times (|a| + |b|), \quad (3)$$

where $\text{sgn}(x)$ denotes the sign of x . This operator is a monoid function, i.e. it satisfies totality, associativity and identity properties. Therefore it is a semi-group on real numbers. The operator is basically a summation operation but the sign of the results behaves like the multiplication operation. As a result, the computational complexity of signal analysis can be decreased significantly.

We define a new "vector product" of two N -dimensional vectors \mathbf{x}_1 and \mathbf{x}_2 in R^N as follows:

$$\langle \mathbf{x}_1, \mathbf{x}_2 \rangle = \sum_{i=1}^N x_1(i) \oplus x_2(i), \quad (4)$$

where $x_1(i)$ and $x_2(i)$ are the i -th entries of the vectors \mathbf{x}_1 and \mathbf{x}_2 , respectively. The co-difference matrix can be constructed from the vector product of two vectors. One can also define a "vector product space" analogous to an inner product space though where our vector product satisfies the requirements of an inner product except the condition of linearity in the first argument. We define the multiplication of a vector by a number a based on (3) and (4) as follows:

$$a \oplus \mathbf{x} = \begin{bmatrix} a \oplus x(1) \\ a \oplus x(2) \\ \vdots \\ a \oplus x(N) \end{bmatrix}, \quad (5)$$

where a is an arbitrary real number. Note that the vector product of a vector \mathbf{x} with itself reduces to a scaled l_1 norm of \mathbf{x} as follows:

$$\langle \mathbf{x}, \mathbf{x} \rangle = \sum_{i=1}^N x(i) \oplus x(i) = 2 \sum_{i=1}^N |x(i)| = 2\|\mathbf{x}\|_1, \quad (6)$$

We define the co-difference matrix for the image region R as

$$\mathbf{C}_d = \frac{1}{N-1} \sum_{k=1}^N (\mathbf{f}_k - \mu) \oplus (\mathbf{f}_k - \mu)^T \quad (7)$$

which can replace the covariance matrix defined in Eq. (2) in image classification problems.

In practice, f_k values can be color pixel values, wavelet transform coefficients, directional derivatives etc. In the next section, the codifference matrix is used in cancer cell-line image classification. A new directional correlation parameter constructed using the new vector product is also used as a feature parameter in covariance (2) and codifference matrices (7).

3. EXPERIMENTAL RESULTS

Background:

The use of the proposed framework in a medical imaging application is now considered. The new multiplication-free vector product is used in place of the conventional inner product and the efficiency of the proposed approach is demonstrated by a microscopic image classification example. Automatic classification of biomedical images is an emerging field, despite the fact that there is a long history of image recognition techniques [4].

In molecular biology studies, experimenters deal with a large number of specimens whose identity have to be checked recurrently during different stages of the experiment. Therefore, predicting labels of cancer cell lines in a fast and accurate manner via a pattern classification approach will greatly enhance biologists' ability to identify different types of cell lines without the need to scrutinize each and every microscopic image one by one. Although cell lines are being used widely as in vitro models in cancer research and drug development, mislabeling cell lines or failure to recognize any contamination may lead to misleading results. Short tandem repeat (STR) analysis is being used as a standard for the authentication of human cell lines. However, this process takes a long time and has to be carried out by an expert. Automated analysis, on the other hand, will provide the scientists a fast and easy-to-use tool that they can use in their own laboratories to verify their cell lines.

Modelling of cell morphology has been studied by several groups, for example for fission yeast in [5] and for e. coli bacteria in [6]. In the fission yeast case, differential expression of protein affects the cell size and, therefore, cell fate, while in the e. coli case, the topological organization is analyzed with respect to the underlying signaling network. To the best of our knowledge there have been no studies that have used morphology of different human cancer cell lines for classification. Eventually, discrimination of 14 classes of biomedical images is achieved, which are all images of cancer cell lines. The dataset at hand consists of two major types of cancer cell

lines, namely breast cancer and liver cancer (hepatocellular carcinoma) with 7 sub-classes, respectively. The dataset consists of 280 images, i.e., 20 per sub-class.

Our approach aims to carry out the automated analysis by extracting a feature vector from the images. These feature parameters reflect the large morphological diversity of the images. The six hepatocellular carcinoma, one hepatoblastoma and seven breast cancer cell lines were obtained from the following sources: FOCUS ([7]), Hep40 ([8]), Huh7 (JCRB JCRB0403), Mahlavu ([9]), PLC (ATCC CRL-8024), SkHep1 (ATCC HTB-52), HepG2 (ATCC HB-8065), BT-20 (ATCC HTB-19), CAMA-1 (ATCC HTB-21), MDA-MB-157 (ATCC HTB-24), MDA-MB-361 (ATCC HTB-27), MDA-MB-453 (ATCC HTB-131), MDA-MB-468 (ATCC HTB-132), T47D (ATCC HTB-133).

The cell lines were seeded into dishes with 20% confluency and grown at 37°C under 5% CO₂ in standard Dulbecco's modified Eagle's medium (DMEM) supplemented with 10% FBS, 1% Non-Essential Aminoacid and 1% penicillin/streptomycin (GIBCO Invitrogen) up to 70% confluency. The authentication of the cell lines was regularly checked by STR profiling. Cell line images were obtained using an Olympus CKX41 inverted microscope with an Olympus DP72 camera with a 20x objective and recorded using 20x magnification. Some example images of different cancer cell line images can be seen in Figure 1.

3.1. Feature Extraction

Microscopic cancer cell line images contain significant amount of oriented singularities. as a result we used directional feature parameters constructed using the new vector product and the directional dula tree complex wavelet transform (DT-CWT) for image representation.

3.1.1. Directional Differences

In order to account for the large morphological variation of the images in our dataset, we evaluated differences between pixels in various directions. Consider two pixels p_1 and p_2 on a two-dimensional image $I(x, y)$. Assume that the Euclidean distance between p_1 and p_2 be d and p_2 lies on a line that has an orientation of angle α with respect to the horizontal coordinate: $I(x + d \cdot \cos \alpha, y + d \cdot \sin \alpha)$ Let us construct a vector of size $i = 1, 2, \dots, A$ as follows:

$$\mathbf{I}_\alpha = [I_\alpha(1), I_\alpha(2), \dots, I_\alpha(A)], \quad (8)$$

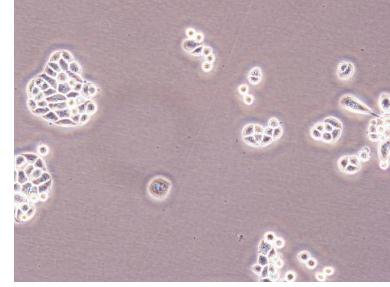
where $I_\alpha(i) = I(x + i \cdot \frac{R}{A} \cos(\alpha), y + i \cdot \frac{R}{A} \sin(\alpha))$, α is a specified angle and R is a chosen radius. Then we can perform the introduced vector product according to (5) as follows:

$$\mathbf{s}_\alpha = I(x, y) \oplus (\mathbf{I}_\alpha - \mu_\alpha), \quad (9)$$

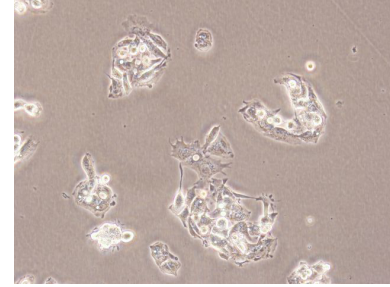
where μ is the mean of the vector.



(a) BT-20 class



(b) Cama-1 class



(c) HepG2 class class

Fig. 1. Examples of the image classes used in our experiments.

\mathbf{s}_α values can be used as a directional feature set for classification purposes.

3.1.2. Dual-Tree Complex Wavelet Transform

The dual-tree complex wavelet transform (DT-CWT) has been recently used in various signal and image processing applications [10], [11], [12] and [13]. It has desirable properties such as shift invariance, directional selectivity and lack of aliasing. In the dual-tree CWT, two maximally decimated discrete wavelet transforms are executed in parallel, where the wavelet functions of two different trees form an approximate Hilbert transform pair [14]. Two-dimensional DT-CWT is also directionally selective in six different orientations. We use DT-CWT complex coefficient magnitudes in detail sub-bands as pixel features and compute codifference descriptors.

Let $W_\theta^R(x, y)$ and $W_\theta^I(x, y)$ denote, respectively, the real and imaginary part of the 2nd level complex wavelet coefficient at the position (x,y) corresponding to directional detail

subbands at orientation θ , where $\theta \in \{\pm 15^\circ, \pm 45^\circ, \pm 75^\circ\}$. The magnitude of the complex wavelet coefficient is then M_θ , computed for $\theta \in \{\pm 15^\circ, \pm 45^\circ, \pm 75^\circ\}$. Hence, for each pixel in the average image $I_a(x, y)$, six complex wavelet coefficient magnitudes $M_\theta(x, y)$ representing six different orientations of DT-CWT are extracted. These magnitudes will be utilized as features in the co-difference and covariance matrix computation for randomly sampled regions of the image $I_a(x, y)$.

3.1.3. Feature vector choice

With

$$\mathbf{M}_\theta(\mathbf{x}, \mathbf{y}) = [M_{\theta_1}(x, y) \dots M_{\theta_6}(x, y)] \quad (10)$$

and

$$\mathbf{s}_\alpha(\mathbf{x}, \mathbf{y}) = [s_{\alpha_1}(x, y) \dots s_{\alpha_8}(x, y)] \quad (11)$$

where $\theta_1 \dots \theta_6$ correspond to the six orientations of DT-CWT detail subbands $\{\pm 15^\circ, \pm 45^\circ, \pm 75^\circ\}$. $\alpha_1 \dots \alpha_8$ correspond to the mean of the eight angles of directional difference score estimation. The feature mapping function employed in this study is then

$$\phi(I, x, y) = [I_a(x, y) |I_x| |I_y| |I_{xx}| |I_{yy}| \mathbf{M}_\theta(\mathbf{x}, \mathbf{y}) \mathbf{s}_\alpha(\mathbf{x}, \mathbf{y})]^T, \quad (12)$$

where $|I_x|$ and $|I_{xx}|$ denote the first- and second-order derivatives at (x, y) of the image I_a .

In this study, the performance of covariance and co-difference matrices is compared to their normalised counterparts given by

$$\hat{\mathbf{C}}(\mathbf{i}, \mathbf{j}) = \begin{cases} \frac{\sqrt{\mathbf{C}(\mathbf{i}, \mathbf{j})}}{\mathbf{C}(\mathbf{i}, \mathbf{i})}, & \text{if } i = j \\ \frac{\sqrt{\mathbf{C}(\mathbf{i}, \mathbf{i})\mathbf{C}(\mathbf{j}, \mathbf{j})}}{\sqrt{\mathbf{C}(\mathbf{i}, \mathbf{i})\mathbf{C}(\mathbf{j}, \mathbf{j})}}, & \text{otherwise} \end{cases} \quad (13)$$

as in [15].

3.1.4. Foreground-Background Segmentation

The images in our dataset show a large amount of background pixels. Clearly, the background is not discriminative. Therefore, we address the issue of segmenting the images into foreground and background before classification. For our dataset, a simple thresholding scheme is not sufficient for segmentation, since foreground pixels have a large variance and may therefore have values higher and lower than the background pixels. We modeled the image as a mixture of two Gaussians, representing the foreground and background pixels, respectively. Using this model, an Expectation-Maximization (EM) algorithm was applied for segmentation. The result is noisy, so a morphological closing operation was applied, followed by median filtering.

Since it is necessary to focus on foreground-like regions in carcinoma cell line images, s analysis square windows are randomly selected, as in [18], from each image with the two constraints: the percentage of the foreground pixels in the

selected region of an image must be above 50 and the variance of the selected region must exceed an image-dependent threshold, which is the variance of the whole image.

3.1.5. Classification

For each subwindow, a codifference matrix was computed using (2) and the feature vector from (12). The image signature is composed of s co-difference matrices of the same size. Each class is represented by $s \times \#(\text{images in each class})$ covariance matrices. A multiclass support vector machine (SVM) classifier is trained with an RBF kernel in the $d(d+1)/2$ -dimensional vector space using the training points. SVM algorithm is implemented using LIBSVM library [19]. For each test subwindow, the corresponding co-difference descriptor is vectorized and fed into the trained SVM model for prediction. Therefore, there exist s labels for each microscopic image corresponding to s subwindows, and the image in question is assigned the label that gets the majority of votes among s labels. The above process is carried out for unnormalised and normalised co-difference matrices.

3.1.6. Results

In our experiments, we compared the co-difference matrix with the covariance matrix. When both are fed into an SVM, we get the results listed in Table 1. Clearly, the results are comparable, with the co-difference matrix outperforming the covariance matrix in the normalised case.

Unnormalised Covariance classification	Normalised Covariance classification	Unnormalised Codifference classification	Normalised Codifference classification
96.4	97.5	95.7	98.2

Table 1. Classification accuracies (in %) for different classifier inputs.

4. CONCLUSIONS

In this paper, a new framework for signal processing based on a novel vector product definition that permits a multiplier-free implementation was introduced. The main advantage of this framework is that it yields multiplication-free computationally efficient algorithms for performing some important tasks in signal processing. This operator can be used to construct a so-called region co-difference matrix that has very similar properties to the established region covariance matrix. The co-difference matrix was successfully applied to the problem of classifying cancer cell line images. The co-difference matrix-based approach produces slightly better results than the covariance matrix without performing any multiplications.

5. REFERENCES

- [1] Oncel Tuzel, Fatih Porikli, and Peter Meer, "Region covariance: A fast descriptor for detection and classification," in *Computer Vision ECCV 2006*, Alex Leonardis, Horst Bischof, and Axel Pinz, Eds., vol. 3952 of *Lecture Notes in Computer Science*, pp. 589–600. Springer Berlin / Heidelberg, 2006.
- [2] H. Tuna, I. Onaran, and A.E. Cetin, "Image description using a multiplier-less operator," *Signal Processing Letters, IEEE*, vol. 16, no. 9, pp. 751–753, sept. 2009.
- [3] A. E. Cetin and K. Duman, "Target detection in sar images using codifference and directional filters," Apr. 2010, vol. 7699.
- [4] M.M. Dundar, S. Badve, V.C. Raykar, R.K. Jain, O. Sertel, and M.N. Gurcan, "A multiple instance learning approach toward optimal classification of pathology slides," in *Pattern Recognition (ICPR), 2010 20th International Conference on*, August 2010, pp. 2732–2735.
- [5] Marco Vilela, Jeffrey J. Morgan, and Paul A. Lindahl, "Mathematical model of a cell size checkpoint," *PLoS Comput Biol*, vol. 6, no. 12, pp. e1001036, 12 2010.
- [6] Ralf Steuer, Steffen Waldherr, Victor Sourjik, and Markus Kollmann, "Robust signal processing in living cells," *PLoS Comput Biol*, vol. 7, no. 11, pp. e1002218, 11 2011.
- [7] L. He, K. J. Isselbacher, J. R. Wands, H.M. Goodman, C. Shih, and A. Quaroni, "Establishment and characterization of a new human hepatocellular carcinoma cell line.," *J. Cell Physiol.*, vol. 165, no. 3, pp. 459–467, 1985.
- [8] B Bouzahzah, Y. Nishikawa, D. Simon, and B.I. Carr, "Growth control and gene expression in a new hepatocellular carcinoma cell line, hep40: inhibitory actions of vitamin k.," *In Vitro*, vol. 20, no. 6, pp. 493–504, 1984.
- [9] P.E. Oefinger, D.L. Bronson, and G.R. Dreesman, "Induction of hepatitis b surface antigen in human hepatoma-derived cell lines.," *J Gen Virol*, vol. 53, no. 1, 1981.
- [10] Ivan W. Selesnick and Ke Yong Li, "Video denoising using 2d and 3d dual-tree complex wavelet transforms," in *Wavelet Appl Signal Image Proc. X (Proc. SPIE 5207*, 2003, pp. 607–618.
- [11] P. Loo and N. Kingsbury, "Digital watermarking using complex wavelets," in *Image Processing, 2000. Proceedings. 2000 International Conference on*, 2000, vol. 3, pp. 29–32 vol.3.
- [12] G.Y. Chen, T.D. Bui, and A. Krzyzak, "Palmprint classification using dual-tree complex wavelets," in *Image Processing, 2006 IEEE International Conference on*, Oct 2006, pp. 2645–2648.
- [13] M. Thamarai and R. Shanmugalakshmi, "Video coding technique using swarm intelligence in 3-d dual tree complex wavelet transform," in *Machine Learning and Computing (ICMLC), 2010 Second International Conference on*, Feb 2010, pp. 174–178.
- [14] I.W. Selesnick, R.G. Baraniuk, and N.C. Kingsbury, "The dual-tree complex wavelet transform," *Signal Processing Magazine, IEEE*, vol. 22, no. 6, pp. 123–151, Nov. 2005.
- [15] Y. H. Habiboglu, O. Gunay, and A. E. Cetin, "Real-time wildfire detection using correlation descriptors," in *19th European Signal Processing Conference (EUSIPCO 2011), Special Session on Signal Processing for Disaster Management and Prevention*, 2011, pp. 894–898.
- [16] Ahmed M. Nazif and Martin D. Levine, "Low level image segmentation: An expert system," *Pattern Analysis and Machine Intelligence, IEEE Transactions on*, vol. PAMI-6, no. 5, pp. 555–577, sept. 1984.
- [17] S. Chabrier, B. Emile, C. Rosenberger, and H. Laurent, "Unsupervised performance evaluation of image segmentation," *EURASIP J. Appl. Signal Process.*, vol. 2006, pp. 217–217, January 2006.
- [18] R. Maree, P. Geurts, J. Piater, and L. Wehenkel, "Random subwindows for robust image classification," in *Computer Vision and Pattern Recognition, 2005. CVPR 2005. IEEE Computer Society Conference on*, June 2005, vol. 1, pp. 34–40 vol. 1.
- [19] Chih-Chung Chang and Chih-Jen Lin, *LIBSVM: a library for support vector machines*, 2001, Software available at <http://www.csie.ntu.edu.tw/~cjlin/libsvm>.